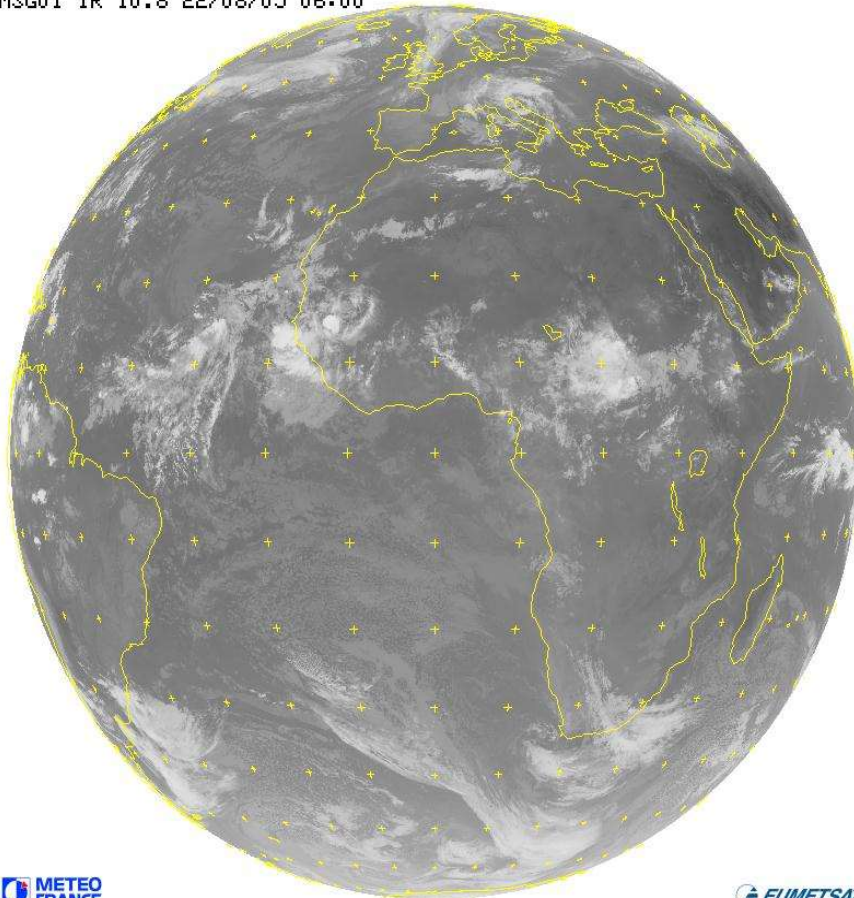


Meso-NH forecast for AMMA-Dry Run - Mon 22 August 2005 – This morning 6 UTC

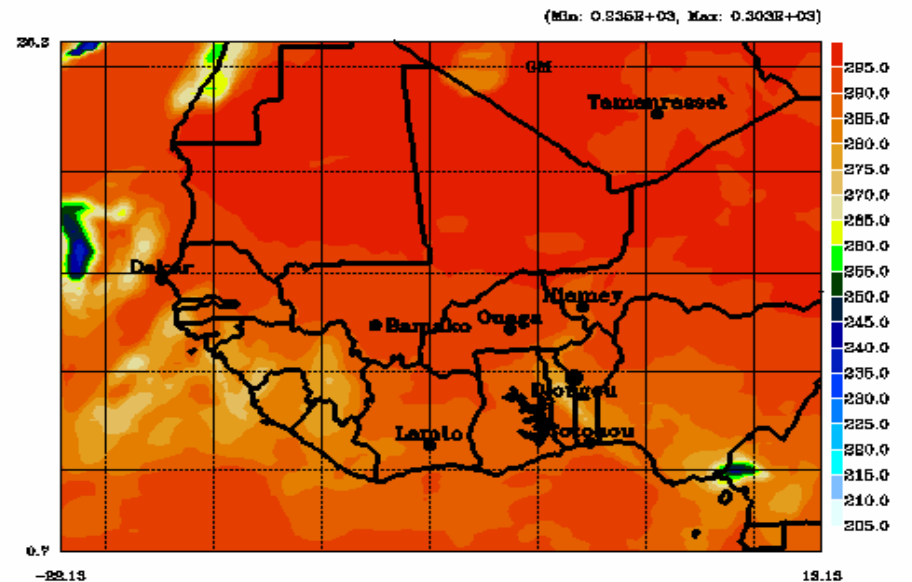
MSG Observation

MSG01 IR 10.8 22/08/05 06:00



MET-8 10.8 micron BT (K)

22/08/20 06H03M15
AMS39.1.f0946.002SAT



DATE MOD. 2005/ 8/22 0H 0M 0S DATE CUR. 2005/ 8/22 6H 0M
LA/UPS/CNR



IR brightness temperature (K) at 10.8um

Correct initialization!

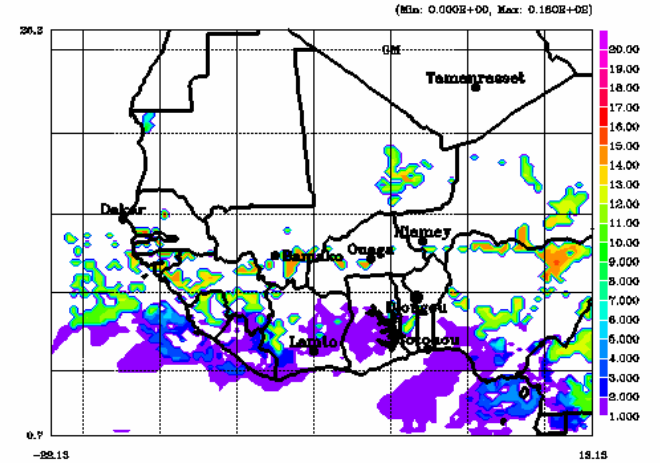
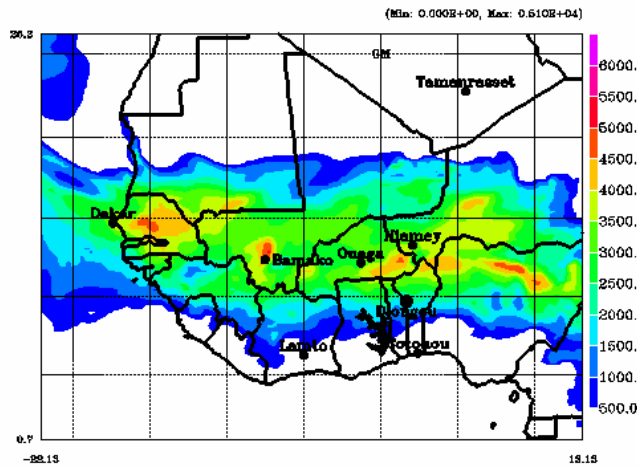
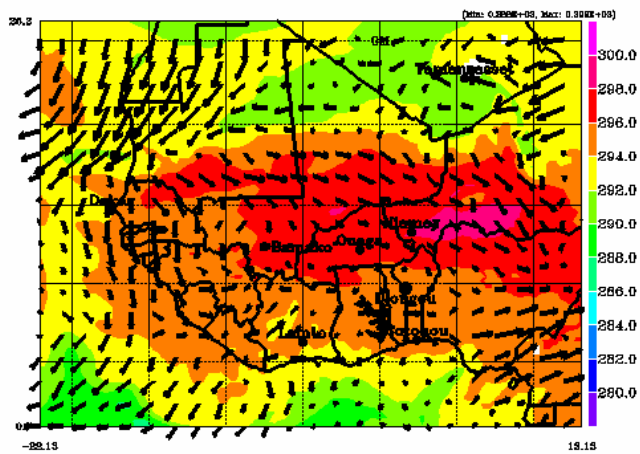
Meso-NH forecast for AMMA-Dry Run - Mon 22 August 2005

Convection this afternoon 18UTC

Wet. Pot. Temp. (K) 1655463P
14.0063A7 CAPE in J/kg

CAPE

Conv Cloud Top Height 1655563P
28333.111346.0063A7



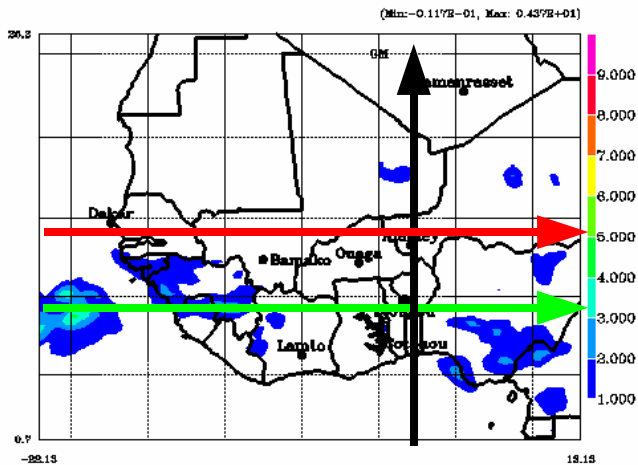
0.582E-01 0.148E+00
Minimum Vector Maximum Vector
DATE MOD. 2005/ 8/22 0H 0M 0S DATE CUR. 2005/ 8/22 18H 0M 0S
DATE MOD. 2005/ 8/22 0H 0M 0S DATE CUR. 2005/ 8/22 18H 0M 0S
DATE MOD. 2005/ 8/22 0H 0M 0S DATE CUR. 2005/ 8/22 18H 0M 0S

Meso-NH forecast for AMMA-Dry Run - Mon 22 August 2005

LiNOx this afternoon - 18 UTC

LiNOx tracer (ppbv) at 300 hPa

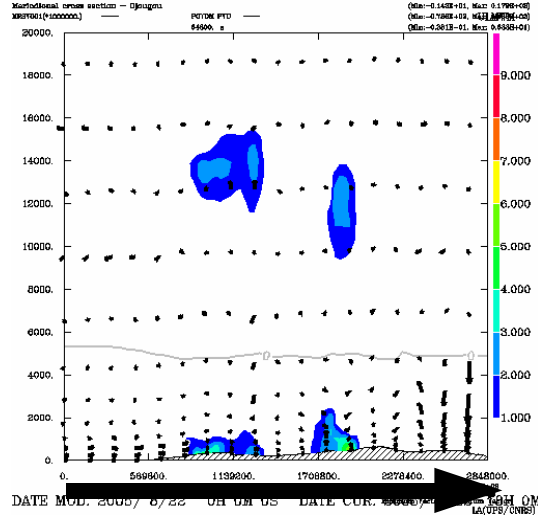
22/08/20 16050M14
AMS30.1.f1944.0063AT



DATE MOD. 2005/ 8/22 0H 0M 0S DATE CUR. 2005/ 8/22 1800M
LA(UPS/CNRS)

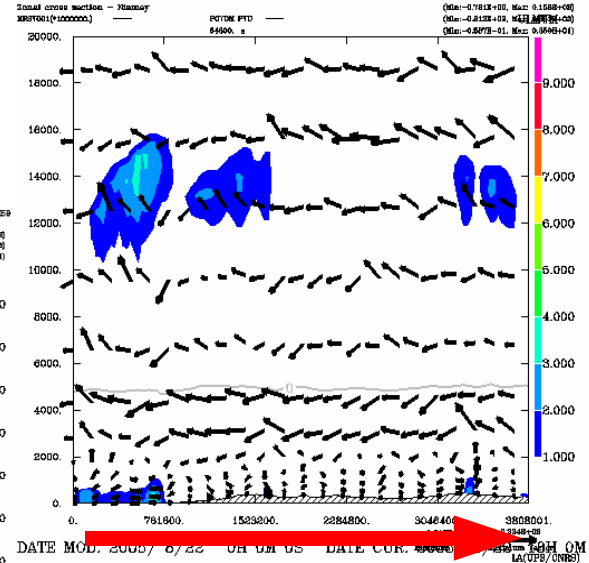
LiNOx tracer (ppbv)

22/08/20 17020M9
AMS30.1.f1944.0063AT



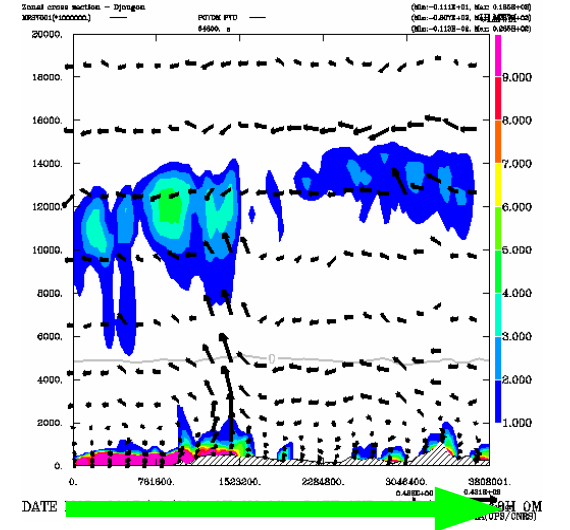
LiNOx tracer (ppbv)

22/08/20 17020M35
AMS30.1.f1944.0063AT



LiNOx tracer (ppbv)

22/08/20 17020M11
AMS30.1.f1944.0063AT



Moderate LiNOx production over Djourou and Niamey

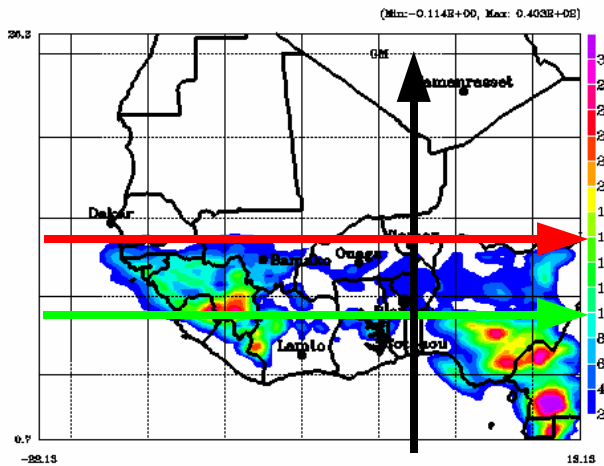
Meso-NH forecast for AMMA-Dry Run - Mon 22 August 2005 18UTC

Meso-NH + 18

Biogenic COV this afternoon

COV tracer (ppbv) at 300 hPa

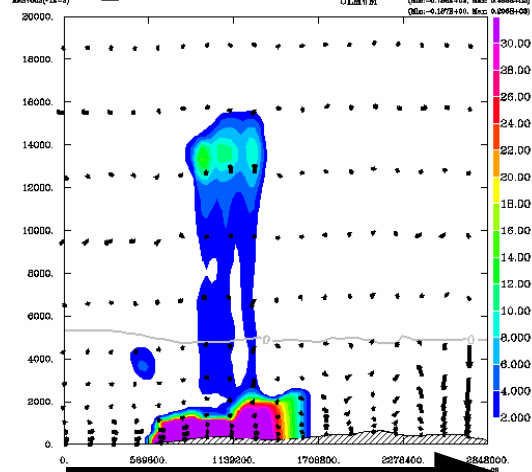
22/08/20 180556M23
2MS30.1.F1944.006SAT



DATE MOD. 2005/ 8/22 0H 0M 0S DATE CUR. 2005/ 8/22 18H 0M
LA(UPS/CNRS)

COV proxy
Metodi cross section - Niamey

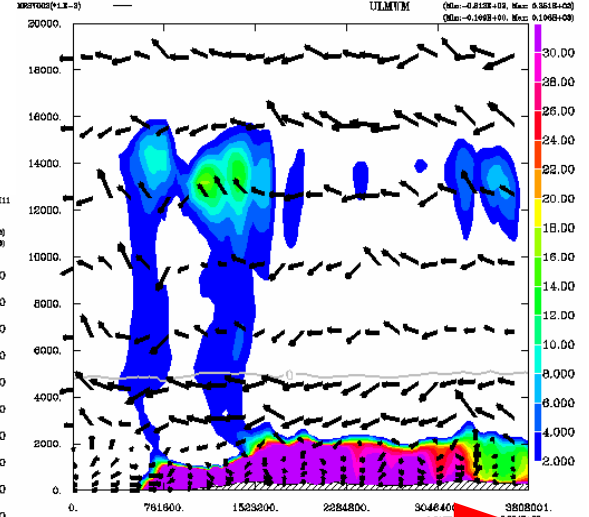
22/08/20 17024M11
2MS30.1.F1944.006SAT



DATE MOD. 2005/ 8/22 0H 0M 0S DATE CUR. 2005/ 8/22 18H 0M
LA(UPS/CNRS)

COV proxy
Total cross section - Niamey

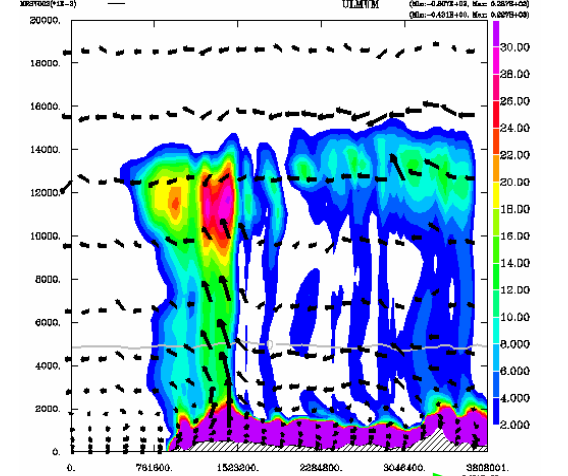
22/08/20 17024M11
2MS30.1.F1944.006SAT



DATE MOD. 2005/ 8/22 0H 0M 0S DATE CUR. 2005/ 8/22 18H 0M
LA(UPS/CNRS)

COV proxy
Total cross section - Djougou

22/08/20 17024M11
2MS30.1.F1944.006SAT



DATE MOD. 2005/ 8/22 0H 0M 0S DATE CUR. 2005/ 8/22 18H 0M
LA(UPS/CNRS)

Strong vertical venting of BCOV above Djougou, no vertical transport over Niamey

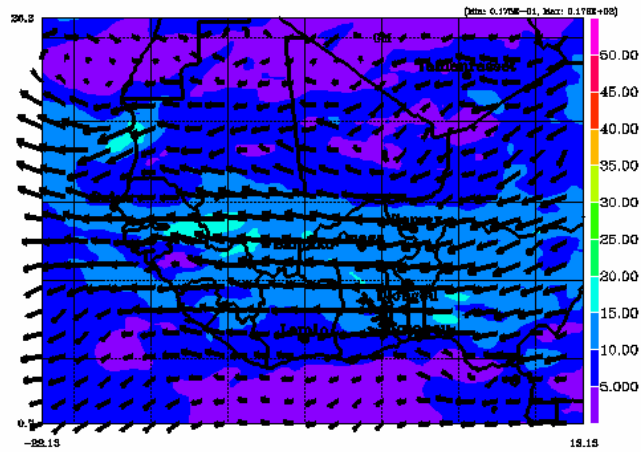
Meso-NH forecast for AMMA-Dry Run - Mon 22 August 2005 18UTC

Meso-NH + 18

Wind @ 700 mb

Wind speed (m/s) at 700hPa

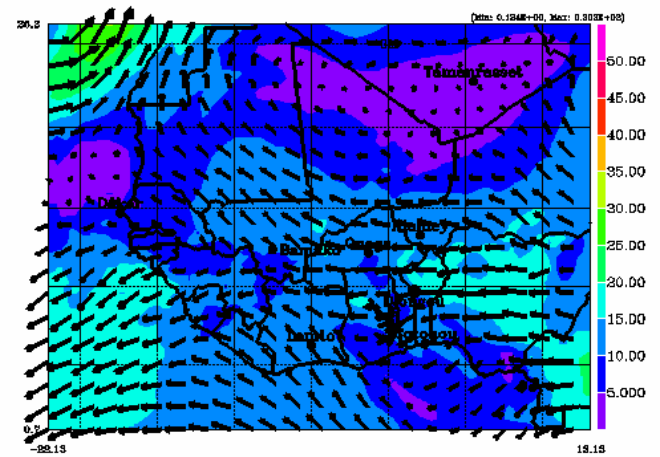
22/08/20 16057K45
AMS33.1.11244.006SAT



Wind @ 200 mb

Wind speed (m/s) at 200hPa

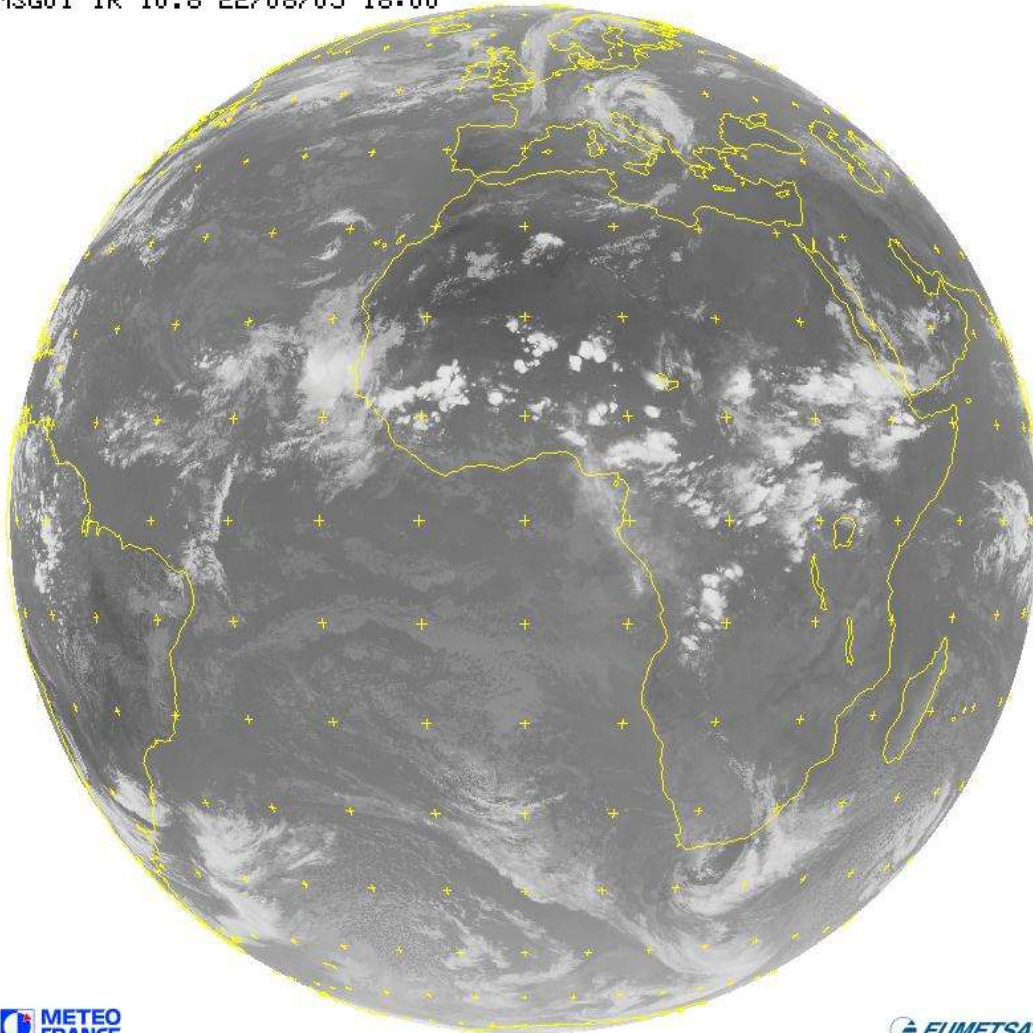
22/08/20 16055K09
AMS33.1.11244.006SAT



Meso-NH forecast for AMMA-Dry Run - Mon 22 August 2005 18UTC

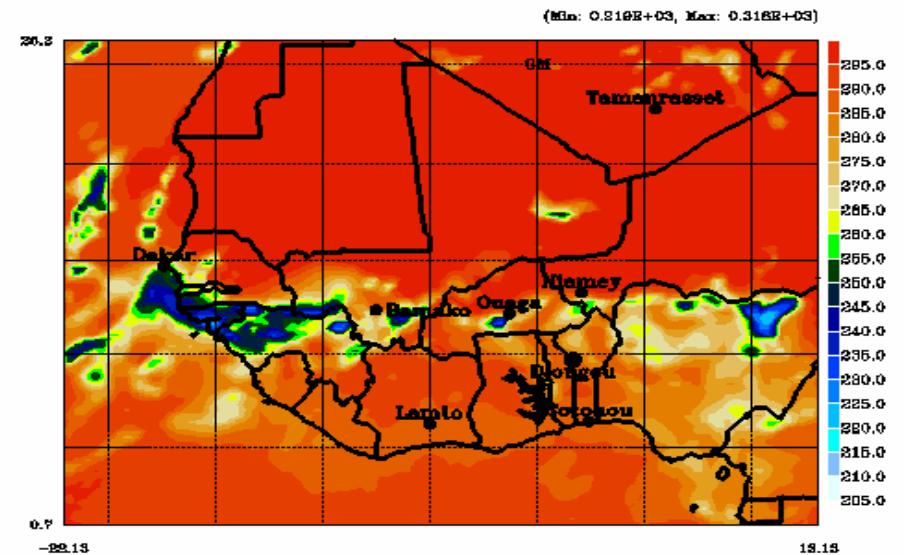
Meso-NH + 18

MSG01 IR 10.8 22/08/05 18:00



MET-8 10.8 micron BT (K)

22/08/20 0800Z15
00000.111944.0063A7



DATE MOD. 2005/ 8/22 0H 0M 0S DATE CUR. 2005/ 8/22 18H 0M
LA/UPS/CNR



Post-experiment evaluation: Meso-NH performed good job with forecasted convection between 10°N and 15°N . The convection observed above 15°N was not forecasted properly.