

# The new ALADIN governance



***Jean-François Geleyn***  
**ALADIN Programme Manager**

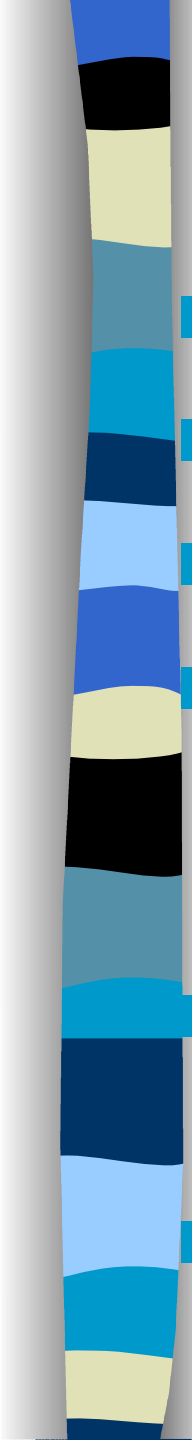
*16<sup>th</sup> ALADIN Workshop*  
*Sofia, Bulgaria, 16/05/2006*



## A stronger and better defined (but perhaps less balanced) governance

- A steady Chairmanship of the **General Assembly** (H. Malcorps, Belgium)
- A **Policy Advisory Committee** (chaired by F. Neuwirth, Austria)
- A **Programme Manager**
- A renewed role for **CSSI** (Chairman, A. Horanyi) and its complementing with a 'Support Team'
- The (ongoing) more precise definition of the role of 15 **Local Team Managers**
- A 'Task Force' for the strategic planning

# The General Assembly (GA)

- 
- Chairman: Henri Malcorps (Be)
  - Vice-Chairman: Jozef Roskar (Si)
  - Preparation steps (from PAC and PM)
  - Now works on preparatory documents (22 of them for the first such occurrence, in Brussels on 19-20/2/06)
  - **Has now a more steady ‘memory’ as well as more MoU-linked powers**
  - **Takes in-fine all decisions related to the ALADIN Programme**

# The Policy Advisory Committee (PAC)

- Chairman: Fritz Neuwirth (At)
- Vice Chairman: Cornel Soci (Ro)
- Members: E. Brun (Fr), E. Legrand (Fr), A. Mokssit (Ma), M. Monteiro (Pt), G. Radnoti (Hu), R. Tolasz (Cz)
- Preparation steps (from PM)
- Now works on preparatory documents (36 of them for the first such occurrence, in Vienna on 26/1/06)
- **Advises respectively GA and PM**
- **Ensures the continuous working of the new governance**

# The Programme Manager (PM)

- Has all the powers
- But no other one



# The Committee for Scientific and System Issues (CSSI)

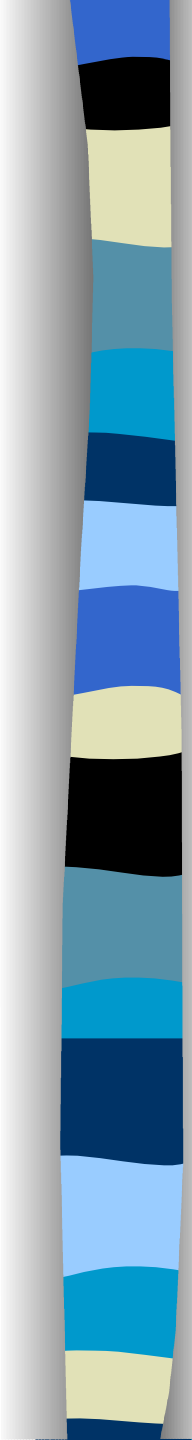
- Predictability and Scientific coordination with HIRLAM: **Andras Horanyi** (CSSI Chair (\*))
- Scientific coordination with LACE: **Mark Zagar** (Chairperson of LSC)
- Scientific coordination with non-LACE/non-MF Partners: **Doina Banciu**
- Data assimilation: **Claude Fischer**
- Numerical efficiency issues: **Martina Tudor**
- Transversal support to distributed operations: **Maria Derkova** (ALADIN-2 officer)
- Maintenance: **Ryad El Khatib**
- Verification and monitoring: ?????
- Interfacing issues: **Bart Catry** (ALADIN-2 officer)
- Towards AROME: **Gwenaelle Hello** (AROME)
- SURFEX: **Piet Termonia**
- *(\* ) the role of the Chairperson will not be hierarchical but of coordination, information exchange and representation, in agreement with the PM.*



# The Support Team (ST, beside CSSI)

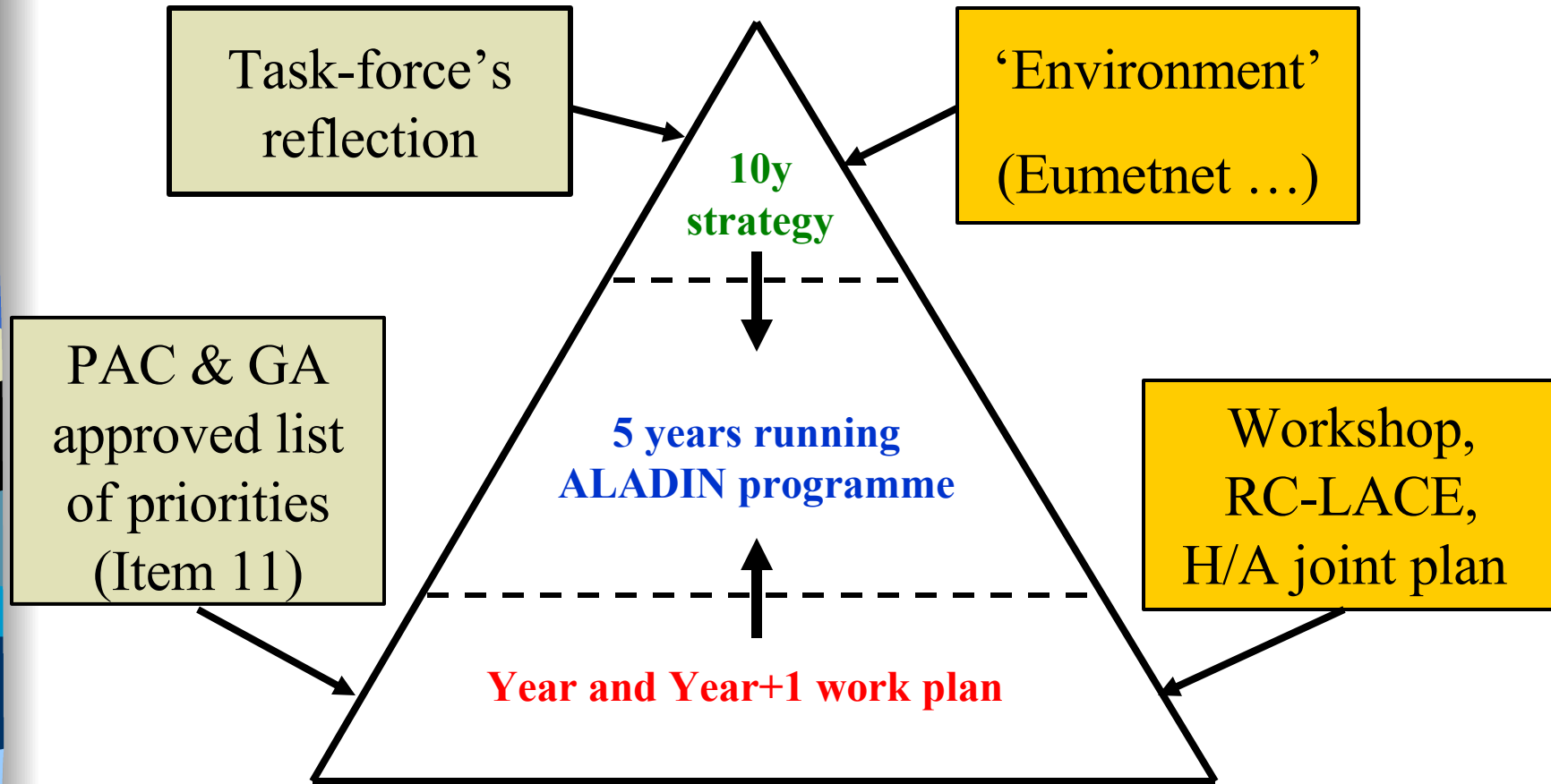
- Consortium level coordination: **Jean-François Geleyn** (ALADIN PM, for the record)
- Consortium level cooperation support (LACE): **Dijana Klaric** (LACE Project Leader)
- Consortium level cooperation support (MF): **Claude Fischer** (Toulouse LTM)
- Documentation officer: ?????
- Information officer: **Maria Derkova**
- Administration and PM assistance: **Patricia Pottier**
- Secretarial support: **Jean Maziejewski**
  
- **CSSI + ST : role and practices**

# CSSI + ST

- 
- Meets once a year with the HIRLAM Management Group (HMG) to monitor the inter-consortia collaboration. The CSSI Chairman ensures the continuity of this aspect
  - Prepares the yearly Work Plan of ALADIN (with special emphasis on parallel or joint actions with HIRLAM)
  - Prepares the Progress Reports (ALADIN and HARMONIE)
  - Monitors the day to day work, in close liaison with LTMs
  - Reacts, on PM's request, to any emergency

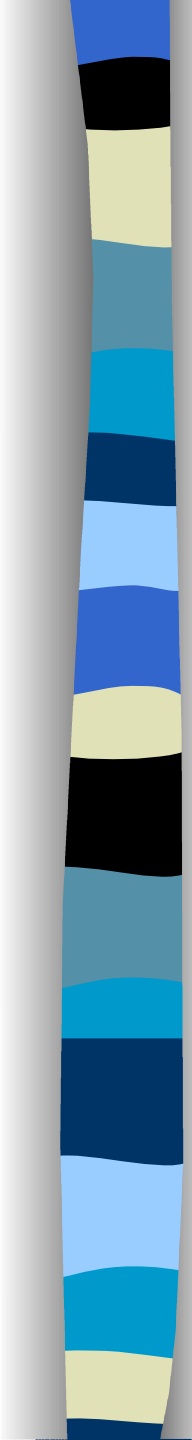


# ALADIN Strategy and Planning

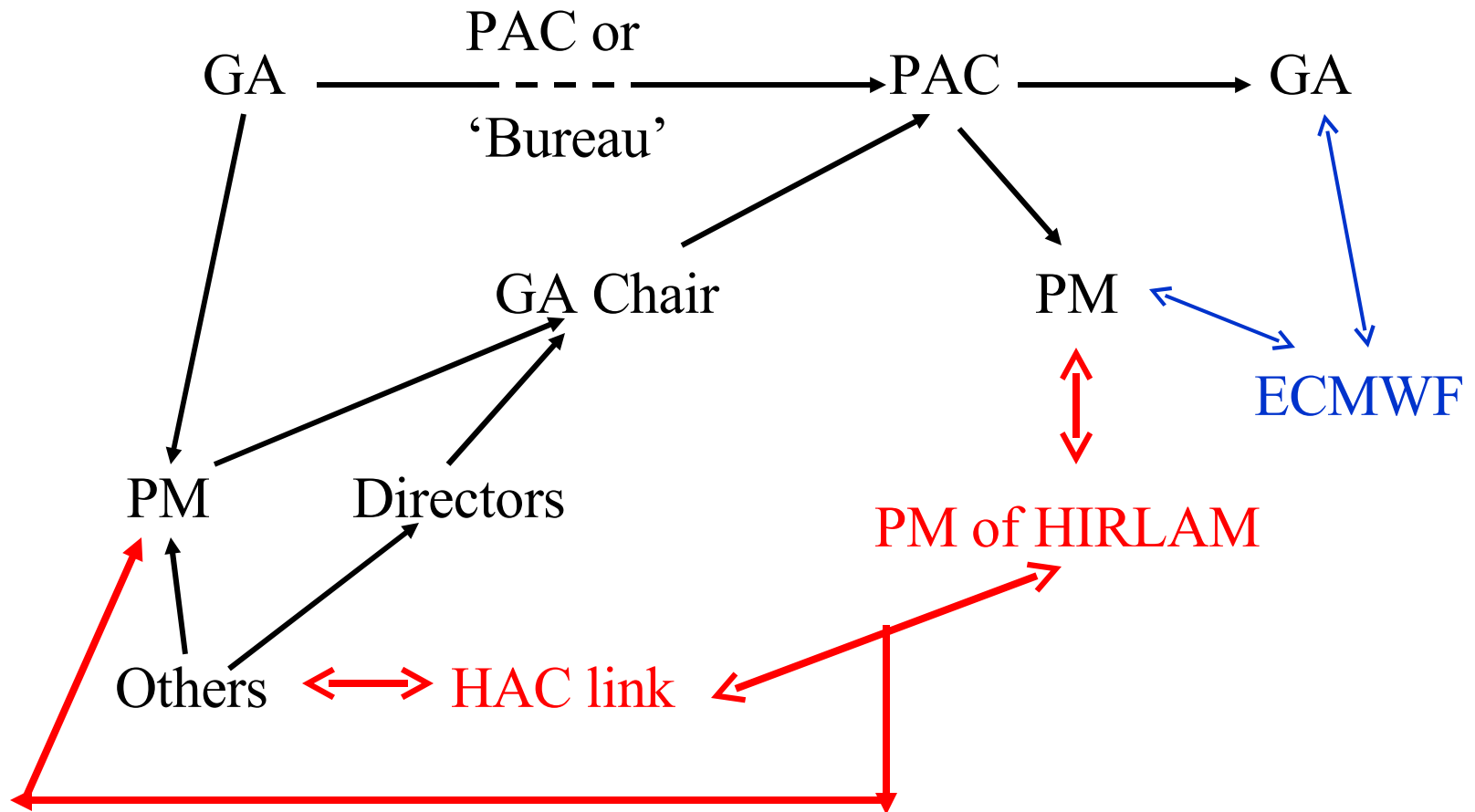


Programme aggregation step

# The 'task force'

- 
- Composition:
    - F. Bouttier (Fr)
    - R. Brozkova (Cz)
    - E. Legrand (Fr)
    - A. Mokssit (Mo)
    - C. Soci (Ro)
    - P. Termonia (Be)
    - M. Zagar (Si)
  - This group (created at the last GA and yet to be activated) will assist PM, PAC and GA in the long term (~10 years) aspects of ALADIN planification
  - There are now obvious links with the 'Euro-NWP Vision' initiative of EUMETNET-SRNWP

# Working schedules and practices around the year



# H-A working schedules and practices

## Split GA – Oct. 04 => ~OK today

