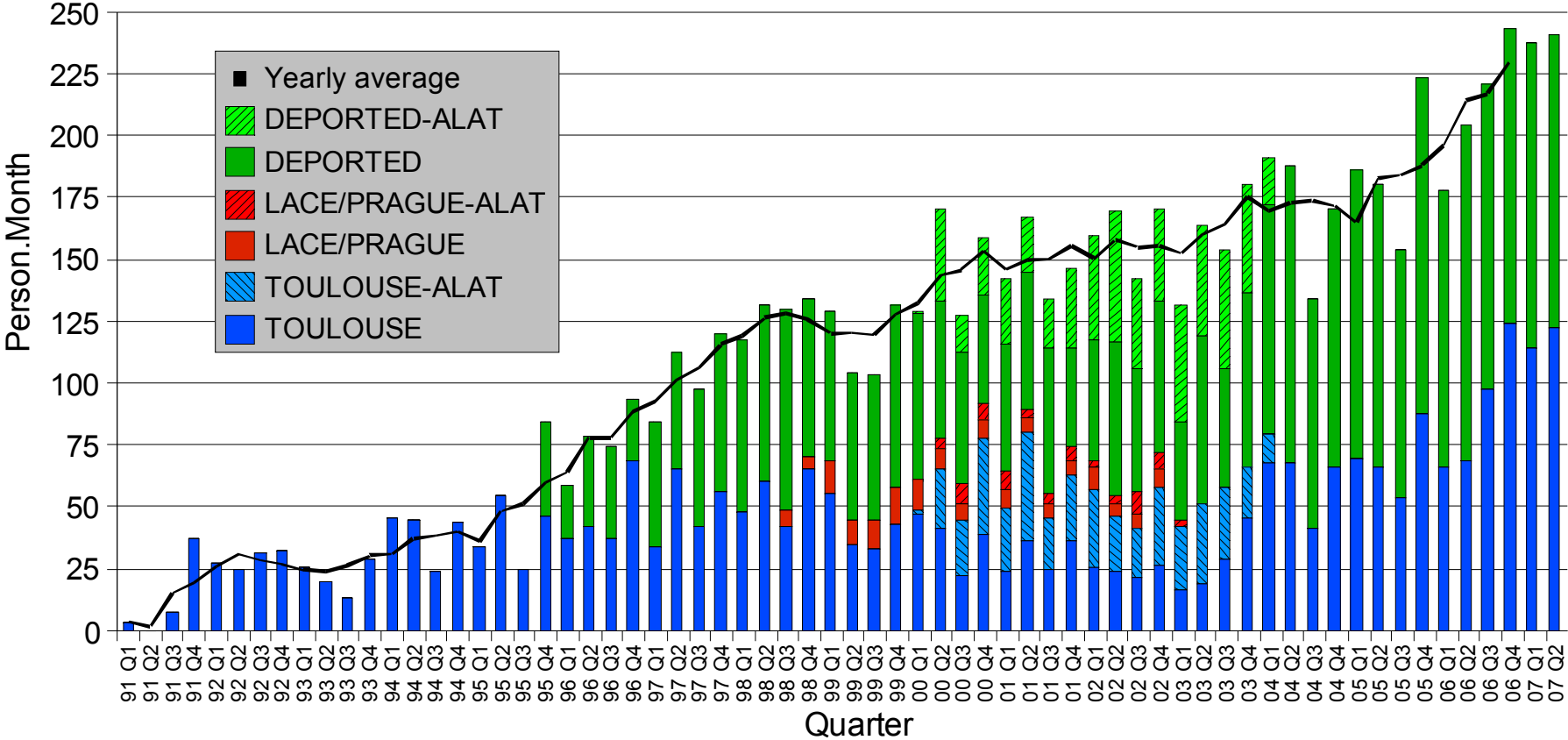


Report on manpower evolution and structure

P. Pottier and J.-F. Geleyn

Total participation in the ALADIN project

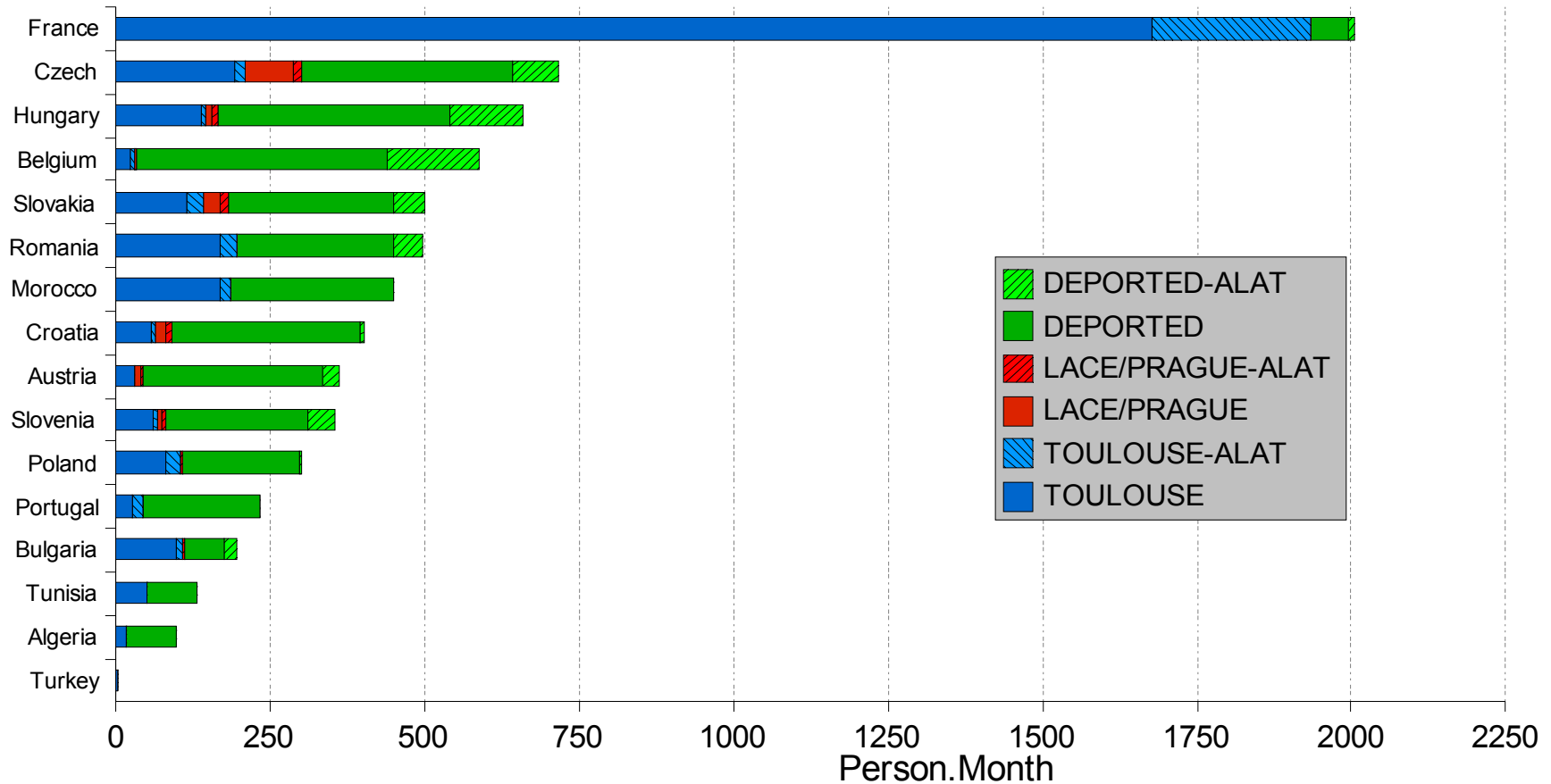
Evolution of the quarterly manpower



Updated on 01 July 2007

Total participation in the ALADIN project

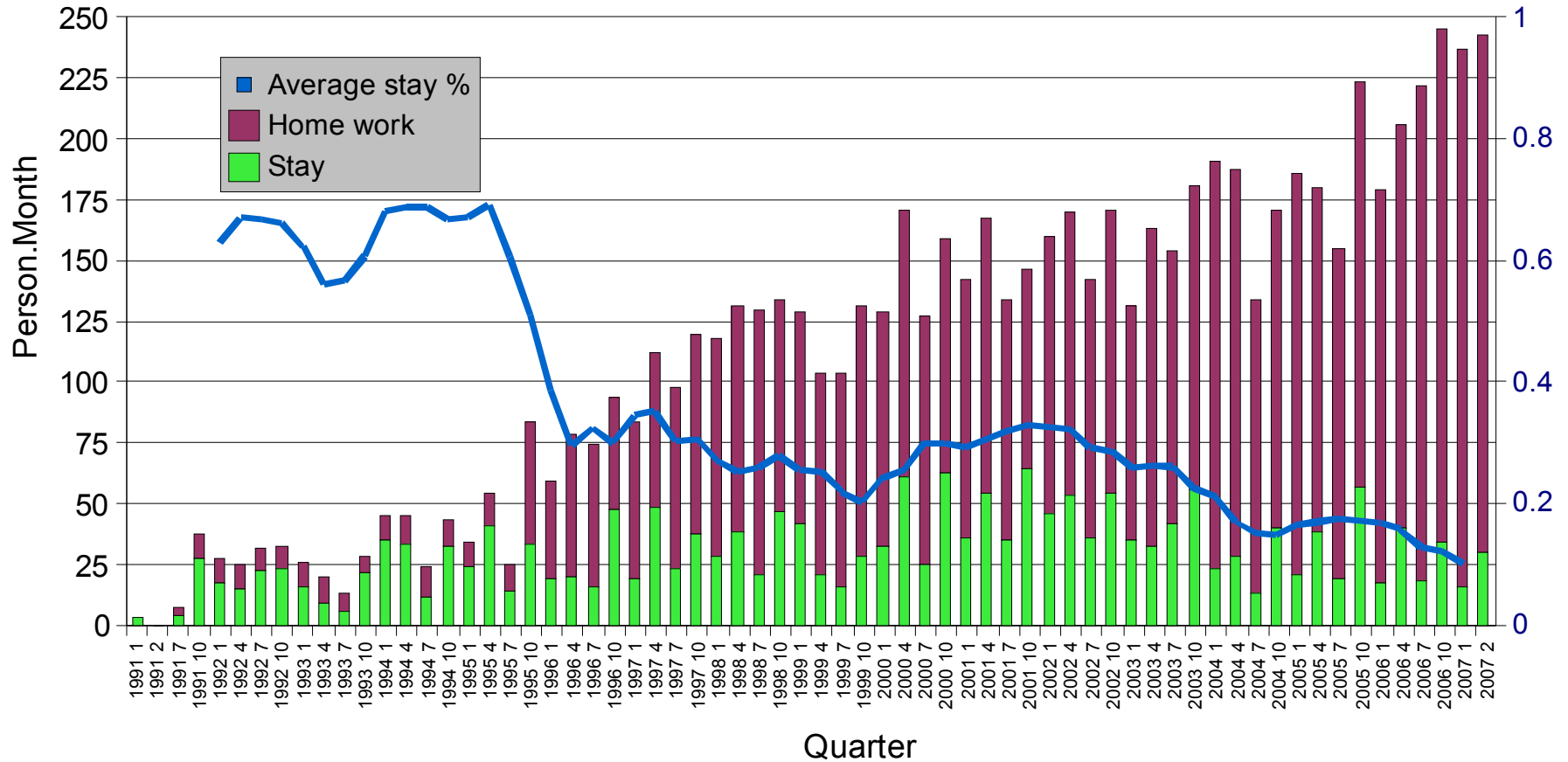
Breakdown of the person.months by member



Updated on 01 July 2007

Total participation in the ALADIN project

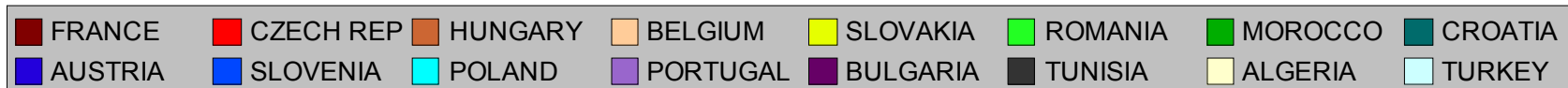
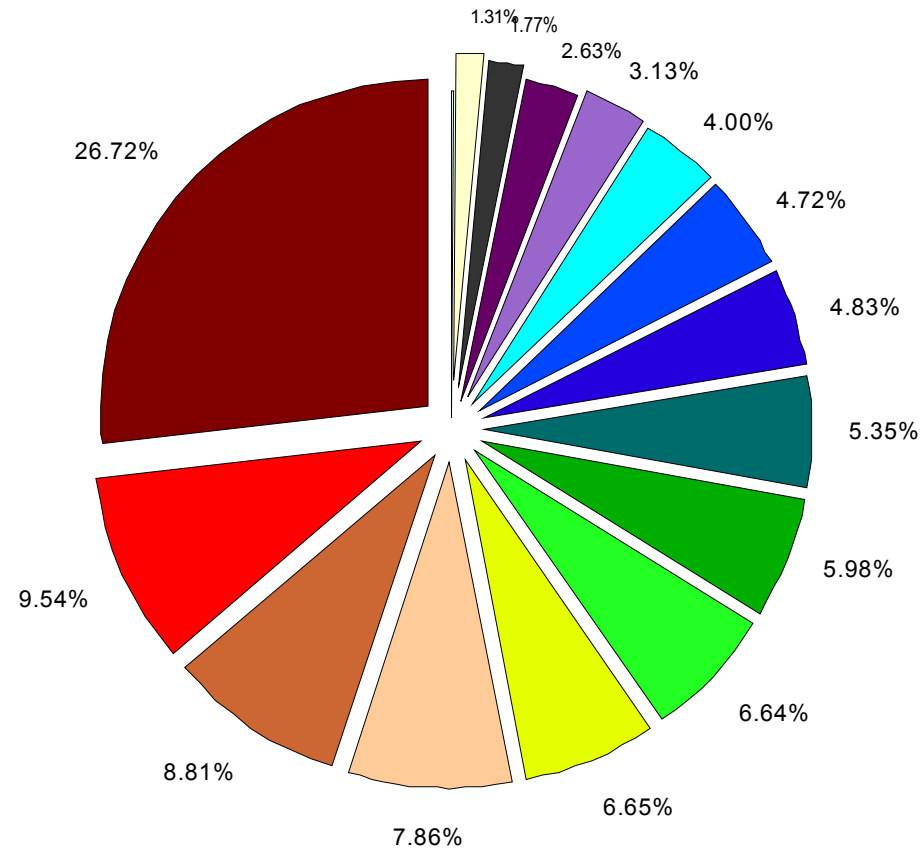
Evolution of the quarterly manpower



Updated on 01 July 2007

Total participation in the ALADIN project

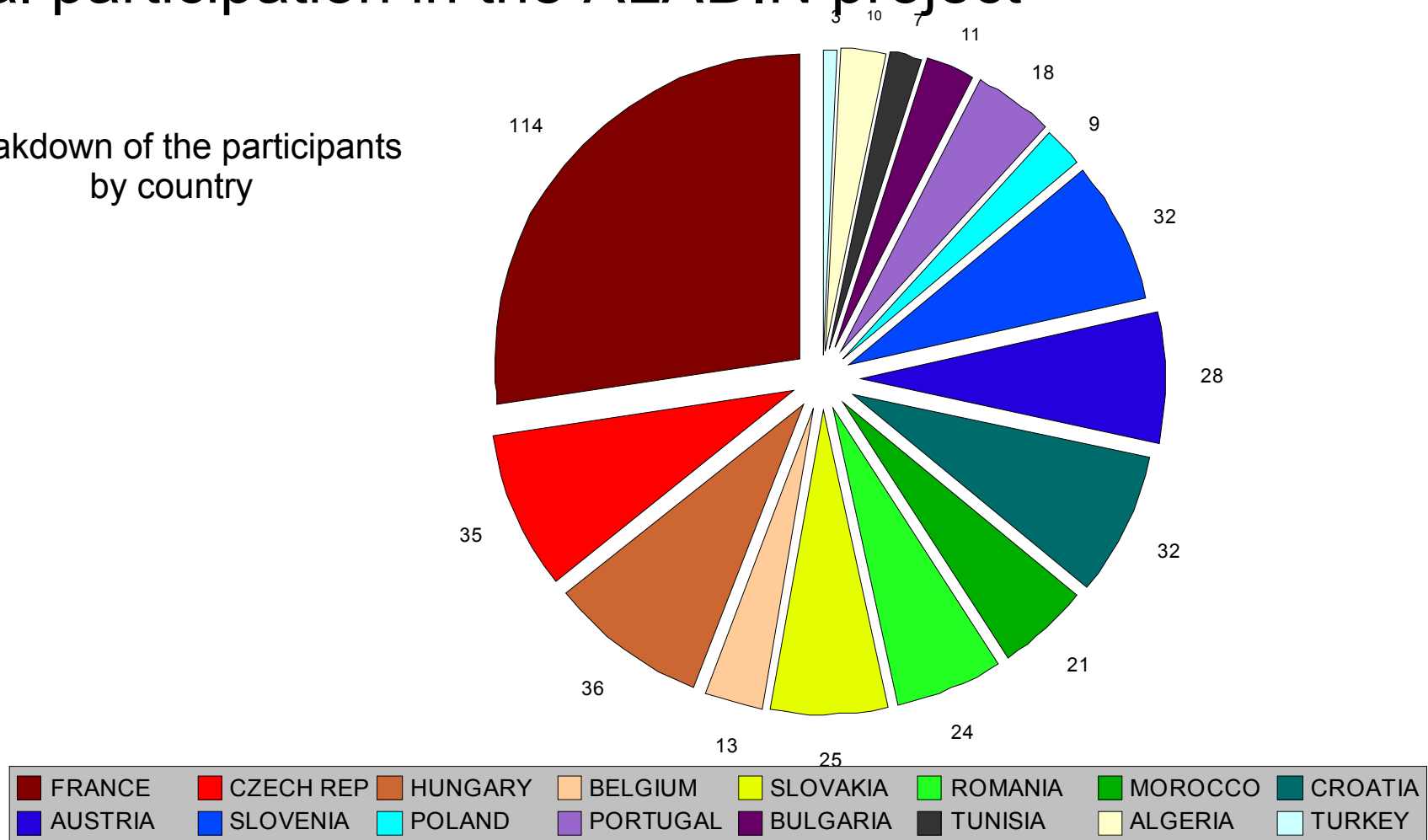
Breakdown of the person.months by country



Updated on 01 July 2007

Total participation in the ALADIN project

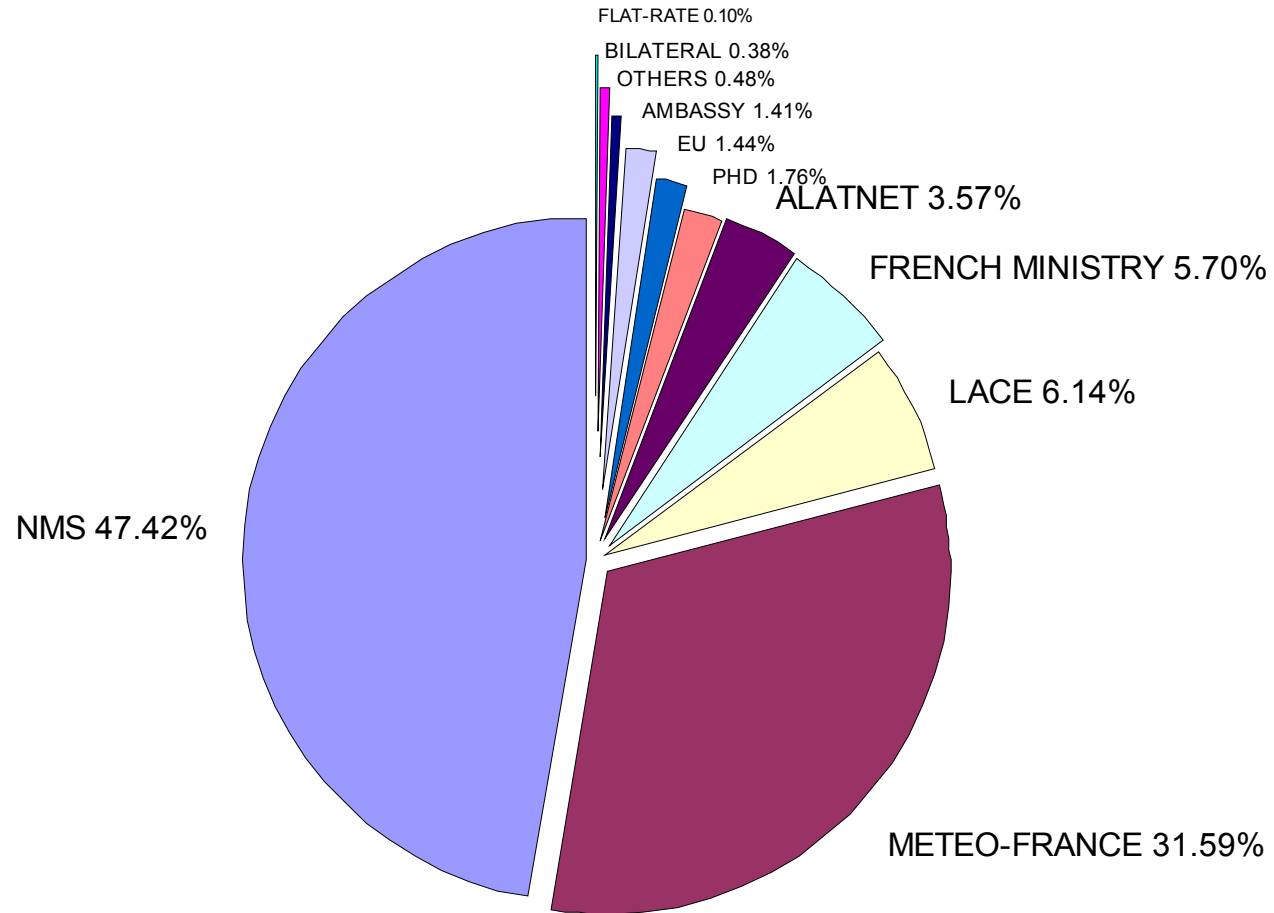
Breakdown of the participants by country



Updated on 01 July 2007

Total Participation in the ALADIN project

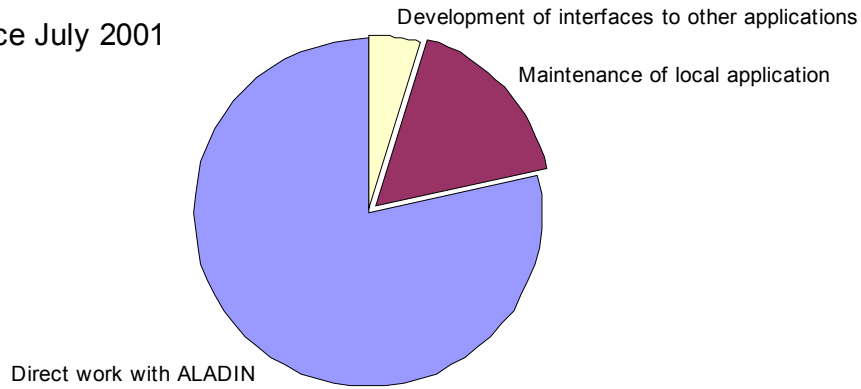
Breakdown of the person.months by money funding



Updated on 01 July 2007

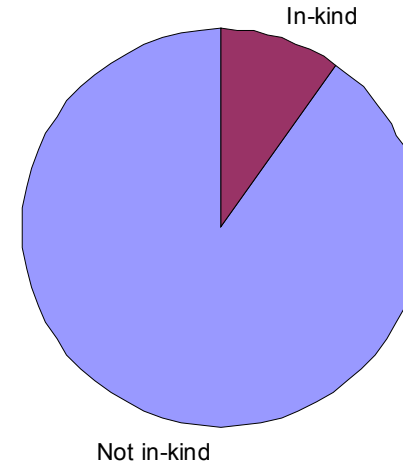
Breakdown of the ALADIN effort by activity

Since July 2001



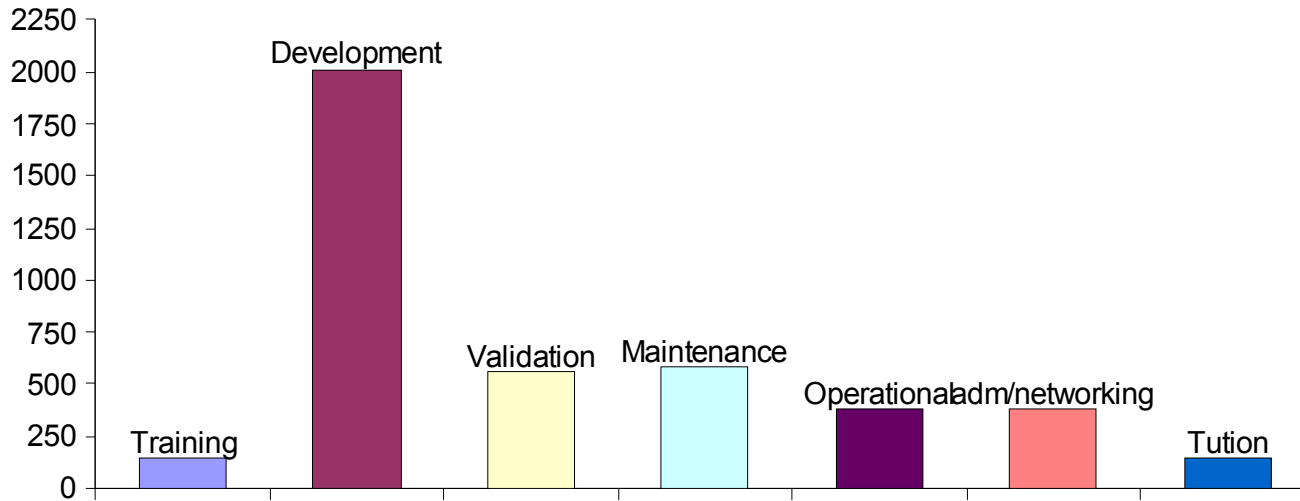
Part of "in-kind" in the ALADIN effort (manpower)

since January 2007



Breakdown of the ALADIN work by type

since July 2001



Updated on 01 July 2007

ALADIN Participation

Country	MoU1 (30/06/1996)		MoU2 (31/03/2001)		MoU3 (30/06/2005)		GA (30/06/2007)	
	Person.Months	Breakdown	Person.Months	Breakdown	Person.Months	Breakdown	Person.Months	Breakdown
FRANCE	217.00	30.9%	684.50	22.5%	1359.50	23.4%	2006.25	26.7%
CZECH REP	94.00	13.4%	376.75	12.4%	600.50	10.4%	716.50	9.5%
HUNGARY	79.50	11.3%	251.00	8.3%	522.00	9.0%	661.50	8.8%
BELGIUM	-	0.0%	191.00	6.3%	459.00	7.9%	589.75	7.9%
SLOVAKIA	37.00	5.3%	214.25	7.1%	403.50	7.0%	499.50	6.7%
ROMANIA	107.50	15.3%	319.25	10.5%	454.50	7.8%	498.75	6.6%
MOROCCO	64.00	9.1%	240.25	7.9%	374.00	6.4%	449.25	6.0%
CROATIA	14.00	2.0%	136.75	4.5%	308.00	5.3%	402.00	5.4%
AUSTRIA	20.50	2.9%	98.00	3.2%	282.75	4.9%	362.75	4.8%
SLOVENIA	26.50	3.8%	156.50	5.2%	286.50	4.9%	354.50	4.7%
POLAND	21.00	3.0%	147.00	4.8%	255.50	4.4%	300.50	4.0%
PORTUGAL	-	0.0%	96.50	3.2%	189.50	3.3%	235.00	3.1%
BULGARIA	21.00	3.0%	114.75	3.8%	181.50	3.1%	197.25	2.6%
TUNISIA	-	0.0%	8.50	0.3%	122.00	2.1%	133.00	1.8%
ALGERIA	-	0.0%	-	0.0%	6.5	0.1%	98.00	1.3%
TURKEY	-	0.0%	-	0.0%	-	0.0%	3.25	0.0%
TOTAL	702.00	100.0%	3035.00	100.0%	5805.25	100.0%	7507.75	100.00%

NB: The figures at 30/06/2007 have not yet been cross-checked. They are therefore likely to evolve a bit and they cannot yet be used to set a scale for the 2008 Royalties redistribution